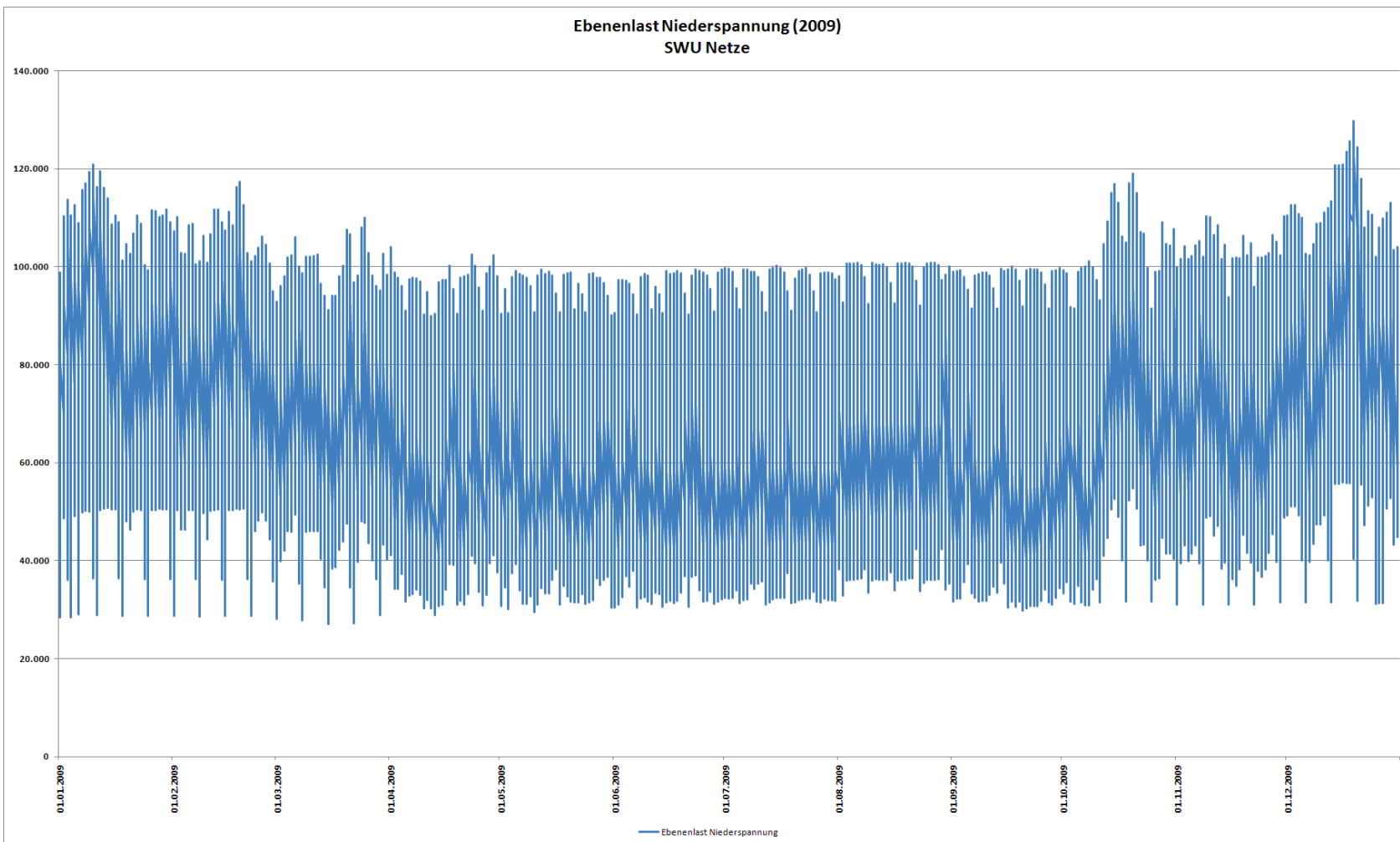


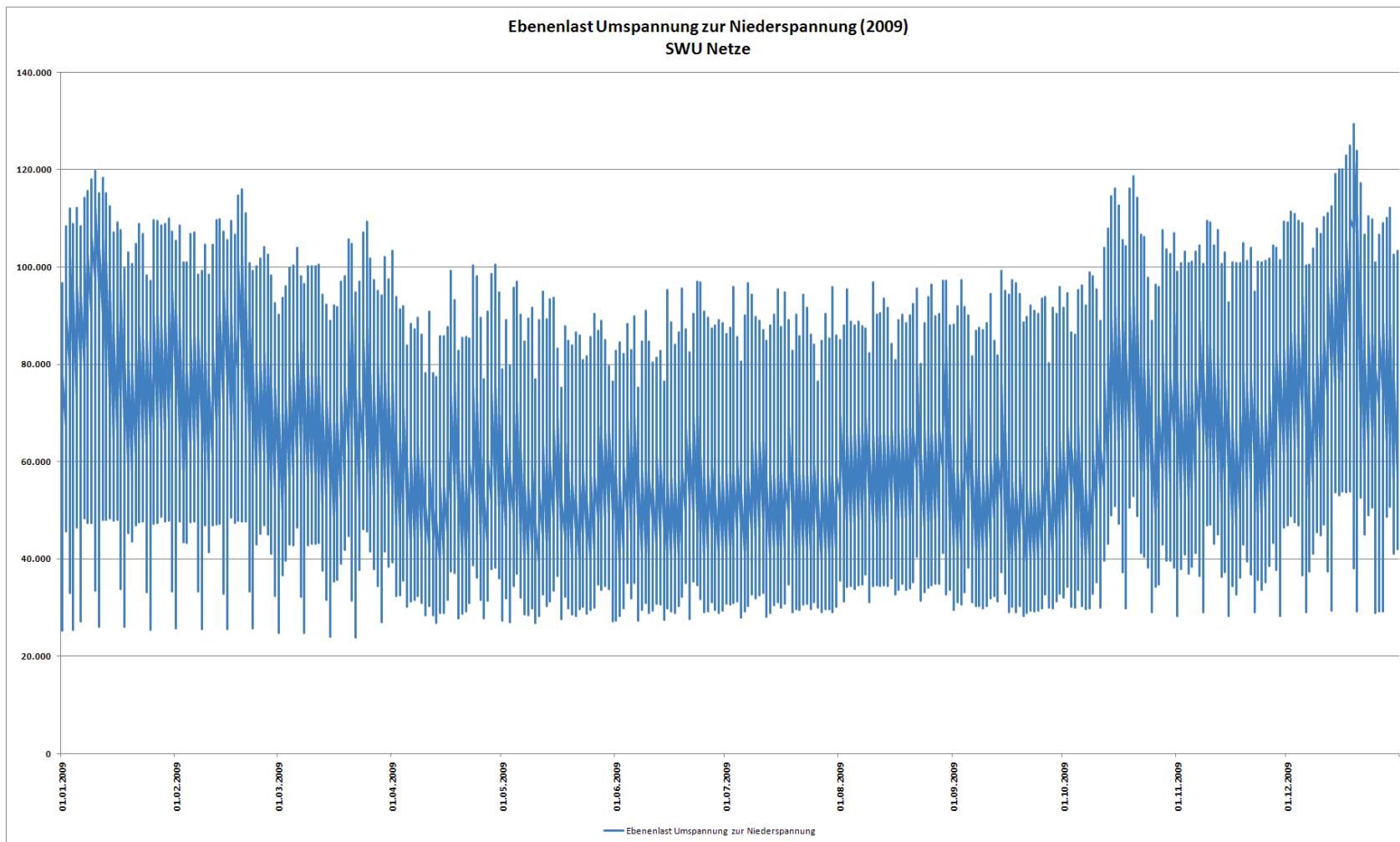
Gesetzliche Grundlage: 17 Abs. 2 Nr. 5 StromNZV

Maximalwert : 129,743 MW



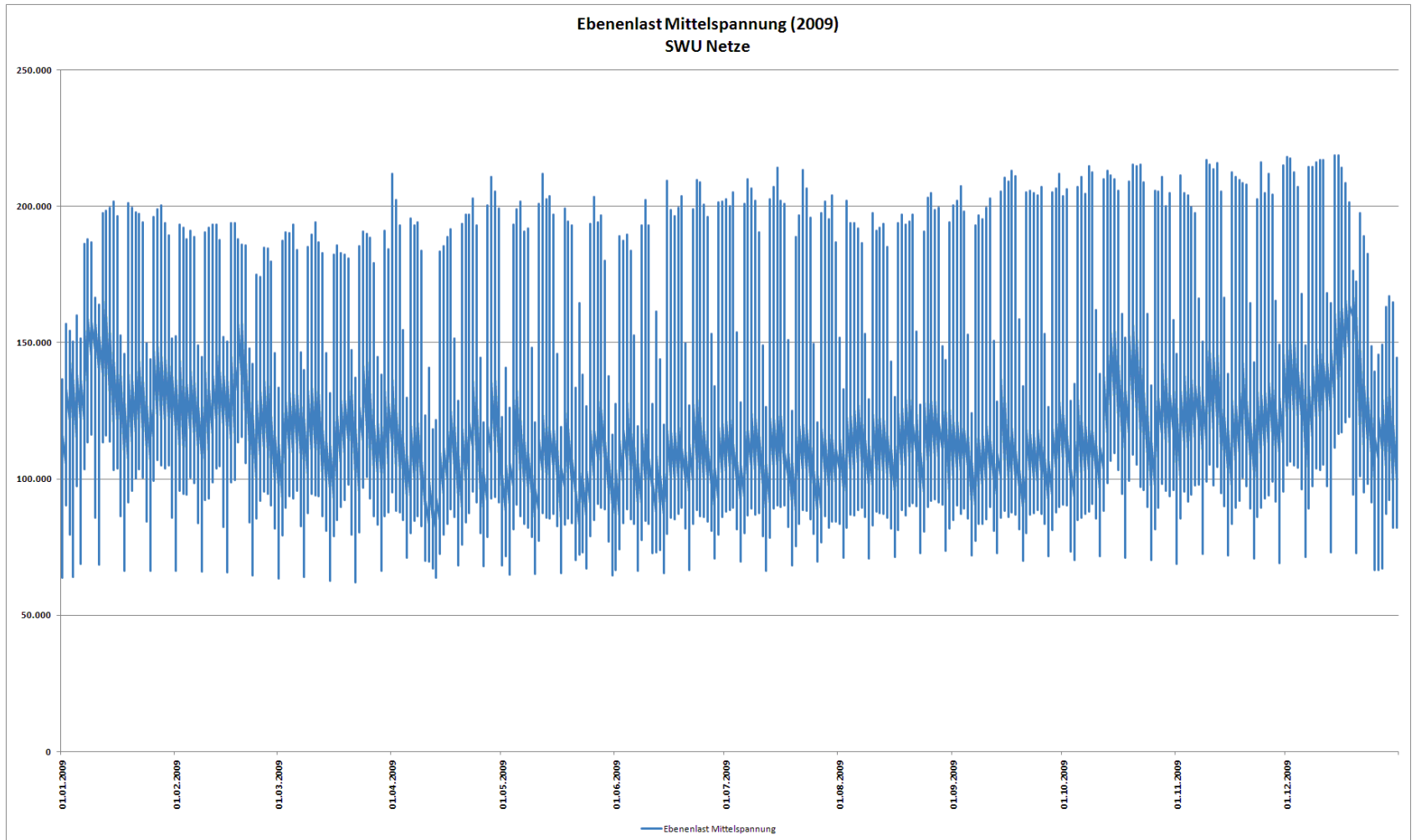
Gesetzliche Grundlage: 17 Abs. 2 Nr. 5 StromNZV

Maximalwert : 129,382 MW



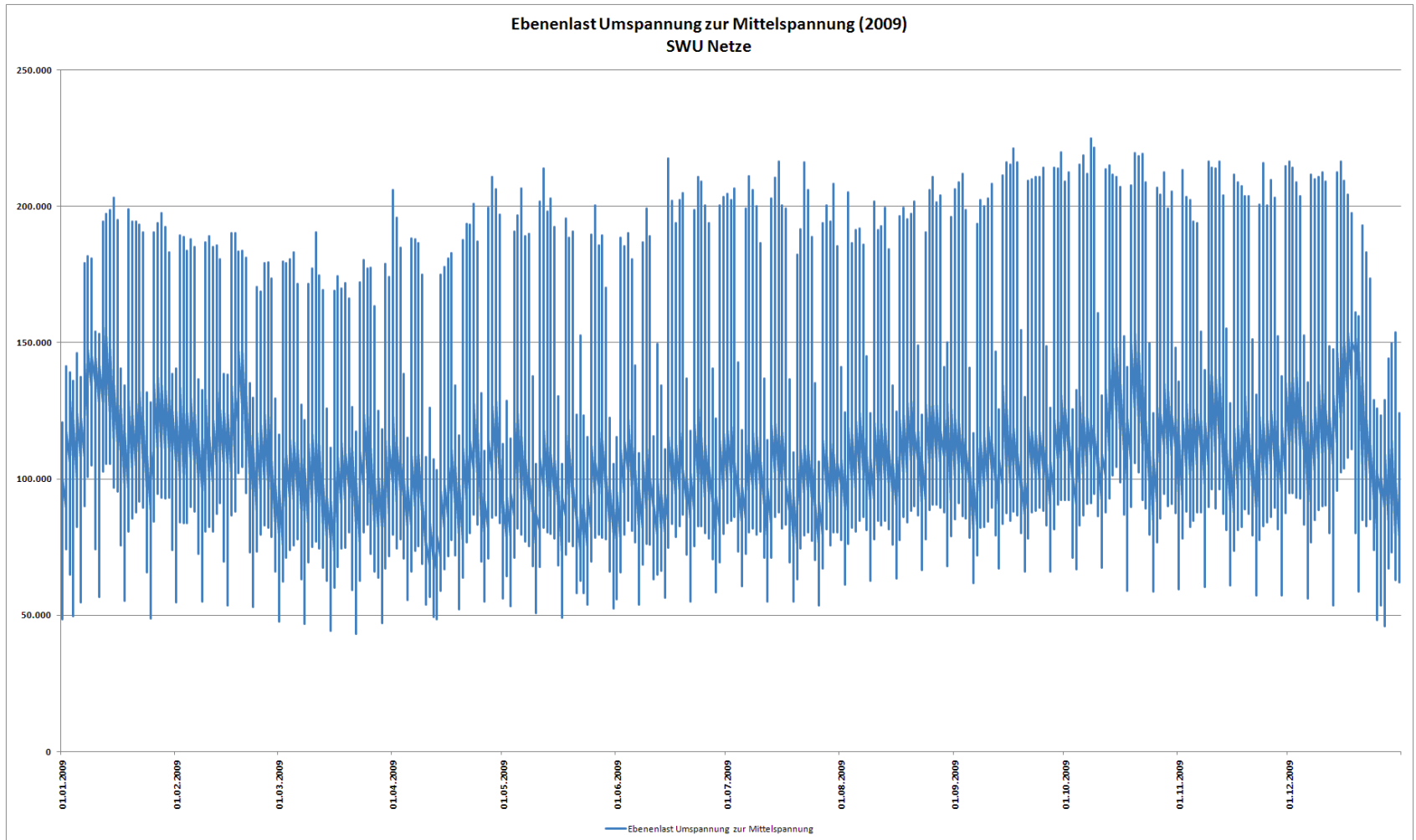
Gesetzliche Grundlage: 17 Abs. 2 Nr. 5 StromNZV

Maximalwert : 218,729 MW



Gesetzliche Grundlage: 17 Abs. 2 Nr. 5 StromNZV

Maximalwert : 224,789 MW



Gesetzliche Grundlage: 17 Abs. 2 Nr. 5 StromNZV

Maximalwert : 183,236 MW

